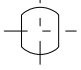
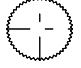



# UNIVERSAL JOINTS FOR INDUSTRIAL APPLICATIONS Ø55

OUR SINGLE OR DOUBLE JOINT CLAMPED TYPE CAN BE MANUFACTURED WITH ANY PINIONS FORMS LISTED ON TABLE BELOW. HOWEVER THE TABLE'S REFERENCES HAVE BEEN STANDARDIZED.

<b>C : PINION PROFILE</b>	<b>C1</b>	$\emptyset$	STANDARD : $\emptyset 25$
	<b>C2</b>		PLEASE CONSULT US
	<b>C3</b>		STANDARD : 54 TEETH / 75 TEETH / 79 TEETH
	<b>C4</b>		PLEASE CONSULT US
	<b>C5</b>		CONSULT US FOR DIFFERENT FORMS

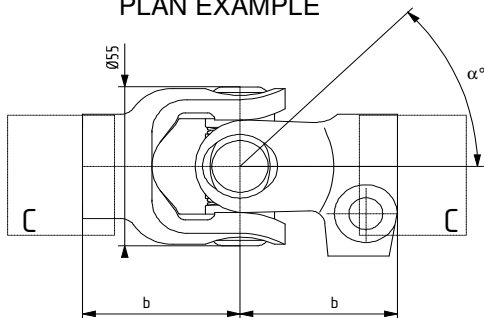


## BEARINGS SWAGING :

ORBITAL SPIN RIVETING ONLY : MAX SPEED : 1500 tr/min - MAX ANGLE  $\alpha^\circ$  :  $50^\circ$   
FOR ANGLE GREATER  $50^\circ$  THAN, PLEASE CONSULT US

## SINGLE JOINT CLAMPED TYPE

PLAN EXAMPLE



### (2) REFERENCES OF SETS :

UNPAINTED : .00 WITH BOLT : .90

PAINTED : .01 WITH BOLT : .91

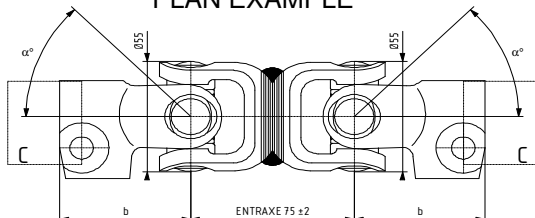
EXAMPLE : 0947.91

DELIVERED PAINTED WITH BOLT

CODE	DIMENSIONS AND FORMS	REFERENCES OF SETS (2)	$b \pm 1$
C1	$\emptyset 25$	0947.**	60
C3	75 TEETH	0638.**	60
C3	79 TEETH	0639.**	60
C3	54 TEETH	5104.**	60

## DOUBLE JOINT CLAMPED TYPE

PLAN EXAMPLE



### (2) REFERENCES OF SETS :

UNPAINTED : .00 WITH BOLT : .90

PAINTED : .01 WITH BOLT : .91

EXAMPLE : 5022.91

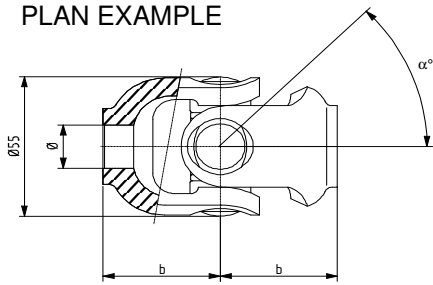
DELIVERED PAINTED WITH BOLT

CODE	DIMENSIONS AND FORMS	REFERENCES OF SETS (2)	$b \pm 1$
C1	$\emptyset 25$	5022.**	60
C3	79 TEETH	5125.**	60

# UNIVERSAL JOINTS FOR INDUSTRIAL APPLICATIONS Ø55

## SINGLE JOINT WELDED TYPE

PLAN EXAMPLE



**(2) REFERENCES OF SETS :**

UNPAINTED : .00 PAINTED : .01

EXAMPLE : 0244.01

DELIVERED PAINTED

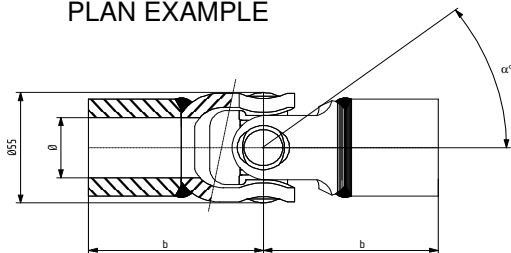
CODE	DIMENSIONS AND FORMS	REFERENCES OF SETS (2)	b ±1
C1	Ø22	0244.**	44
C1	Ø17	5134.**	44



ON REQUEST, IT'S POSSIBLE TO ASSOCIATE DIFFERENT DIAMETERS  
EXAMPLE : Ø22 + Ø17

## SINGLE JOINT PINNED TYPE

PLAN EXAMPLE



**(2) REFERENCES OF SETS :**

UNPAINTED : .00 PAINTED : .01

EXAMPLE : 0291.01

DELIVERED PAINTED

CODE	DIMENSIONS AND FORMS	REFERENCES OF SETS (2)	b ±1
C1	Ø30	0291.**	80