
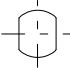
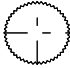



UNIVERSAL JOINTS FOR INDUSTRIAL APPLICATIONS Ø42

OUR SINGLE OR DOUBLE JOINTS CLAMPED TYPE CAN BE MANUFACTURED WITH ANY PINIONS FORMS LISTED ON TABLE BELOW. HOWEVER THE TABLE'S REFERENCES HAVE BEEN STANDARDIZED.

C : PINION PROFILE	C1		STANDARD : Ø15;Ø17;Ø20
	C2		STANDARD : Ø19x14
	C3		STANDARD : 36 TEETH 5/8" - 28 TEETH/40 DIVISIONS - 37 INVOLUTE TEETH - 48 TEETH 3/4" - 21 INVOLUTE TEETH
	C4		STANDARD : 5 TEETH / 27 DIVISIONS
	C5		CONSULT US FOR DIFFERENT FORMS

BEARINGS SWAGING :

SWAGING BY STAKING : MAX SPEED : 1000 tr/min - MAX ANGLE α° : 34°

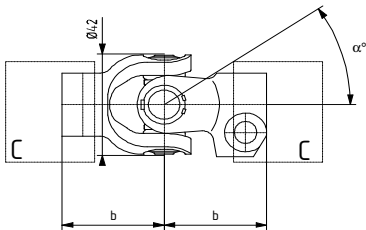
SPECIFICS : SPEED GREATER THAN 1000 tr/min

FOR ANGLE GREATER THAN 34° , PLEASE CONSULT US



SINGLE JOINT CLAMPED TYPE

PLAN EXAMPLE



(2) REFERENCES OF SETS :

UNPAINTED : .00 WITH BOLT : .90

PAINTED : .01 WITH BOLT : .91

EXAMPLE : 0734.91

DELIVERED PAINTED WITH BOLT

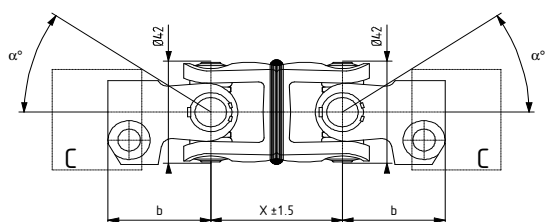
CODE	DIMENSIONS AND FORMS	REFERENCES OF SETS (2)	b ±1
C1	Ø15	0734.**	39
C1	Ø15	2695.**	39
C1	Ø17	0311.**	39
C1	Ø17	2748.**	39
C1	Ø20	0839.**	39
C1	Ø20	2749.**	39
C2	Ø19x14	0309.**	39
C2	Ø19x14	0102.**	39
C3	36 TEETH 5/8"	0265.**	39
C4	5 TEETH/27 DIVISIONS	0310.**	39
C4	5 TEETH/27 DIVISIONS	0109.**	39

UNIVERSAL JOINTS FOR INDUSTRIAL APPLICATIONS Ø42

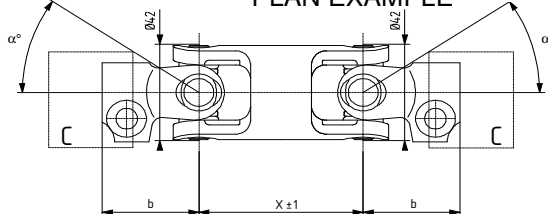
DOUBLE JOINT CLAMPED TYPE



PLAN EXAMPLE



PLAN EXAMPLE



(2) REFERENCES OF SETS :

UNPAINTED : .00 WITH BOLT : .90

PAINTED : .01 WITH BOLT : .91

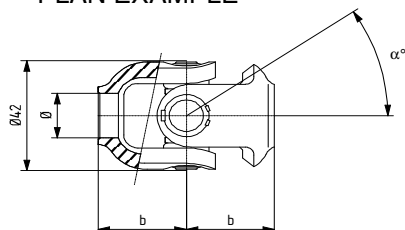
EXAMPLE : 5087.91

DELIVERED PAINTED WITH BOLT

CODE	DIMENSIONS AND FORMS	REFERENCES OF SETS (2)	b ± 1	X
C3	36 TEETH 5/8"	5087.**	39	50
C1	Ø15	5118.**	39	50
C1	Ø20	5119.**	39	50
C1	Ø17	5126.**	38.75	50
C1	Ø20	5152.**	38.75	66

SINGLE JOINT WELDED TYPE

PLAN EXAMPLE



(2) REFERENCES OF SETS :

UNPAINTED : .00 PAINTED : .01

EXAMPLE : 306.01

DELIVERED PAINTED

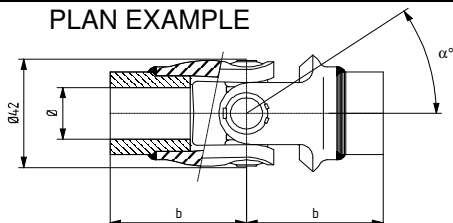
CODE	DIMENSIONS AND FORMS	REFERENCES OF SETS (2)	b ± 1
C1	Ø20	306.**	31
C1	Ø17	307.**	31
C1	Ø18	570.**	31

ON REQUEST, IT'S POSSIBLE TO ASSOCIATE DIFFERENT DIAMETERS

EXAMPLE : Ø20 + Ø17

SINGLE JOINT PINNED TYPE

PLAN EXAMPLE



(2) REFERENCES OF SETS :

UNPAINTED : .00 PAINTED : .01

EXAMPLE : 0886.01

DELIVERED PAINTED

CODE	DIMENSIONS AND FORMS	REFERENCES OF SETS (2)	b ± 1
C1	Ø30	0886.**	55
C1	Ø25	5048.**	72
C1	Ø20	5107.**	51