

SHAFT WITH JOINT Ø42-Ø55

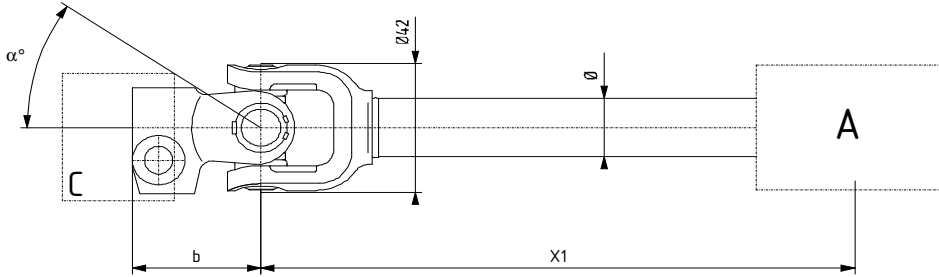
OUR SHAFTS WITH SINGLE OR DOUBLE JOINT OR COMPREHENSIVE ONE'S CAN BE MANUFACTURED WITH ANY PINIONS FORMS AND ANY TIP TYPES LISTED ON TABLE BELOW.

Ø42



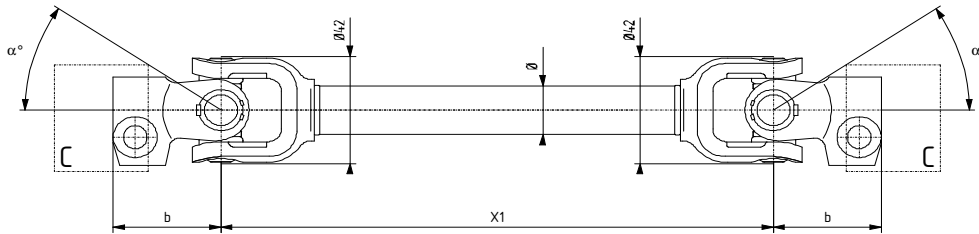
SINGLE JOINT SHAFT

PLAN EXAMPLE



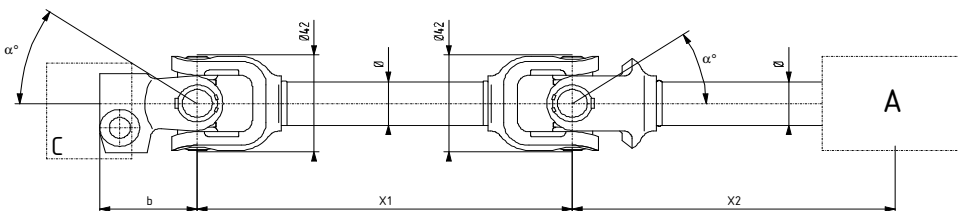
DOUBLE JOINT SHAFT

PLAN EXAMPLE



COMPREHENSIVE SHAFT

PLAN EXAMPLE



SHAFT AND TUBE PROFILE

OUR SHAFTS CAN BE REALIZED WITH DIFFERENT DIAMETERS(Ø).
EITHER SHAFT OR TUBE PROFILE.

Ø : 30-26-24-22-19-17

CONSULT US FOR DIFFERENT DIAMETERS.

THE LENGTH X1 AND X2 ARE DETERMINED ACCORDING TO CUSTOMER'S REQUIREMENTS.

BEARINGS SWAGING :

SWAGING BY STAKING : MAX SPEED : 1000 tr/min - MAX ANGLE α° : 34°

SPECIFICS : SPEED GREATER THAN 1000 tr/min

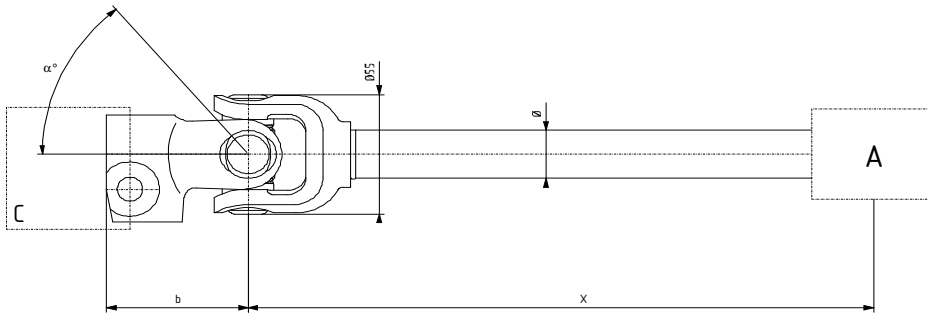
FOR ANGLE GREATER THAN 34° , PLEASE CONSULT US

SHAFT WITH JOINT Ø42-Ø55

Ø55

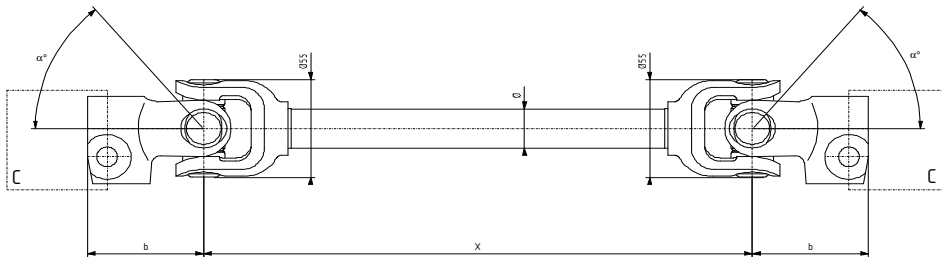
SINGLE JOINT SHAFT

PLAN EXAMPLE



DOUBLE JOINT SHAFT

PLAN EXAMPLE



SHAFT AND TUBE PROFILE

OUR SHAFTS CAN BE REALIZED WITH DIFFERENT DIAMETERS(Ø).
EITHER SHAFT OR TUBE PROFILE.

Ø : 22 IS A STANDARD DIAMETER

CONSULT US FOR DIFFERENT DIAMETERS.

THE LENGTH X IS DETERMINED ACCORDING TO CUSTOMER'S REQUIREMENTS.

BEARINGS SWAGING :

ORBITAL SPIN RIVETING ONLY : MAX SPEED : 1500 tr/min - MAX ANGLE α° : 50°
FOR ANGLE GREATER 50° THAN, PLEASE CONSULT US

			Ø42	Ø55
C : PINION PROFILE	C1	Ø	STANDARD : $\varnothing 15; \varnothing 17; \varnothing 20$	STANDARD : $\varnothing 25$
	C2		STANDARD : $\varnothing 19 \times 14$	PLEASE CONSULT US
	C3		STANDARD: 36 TEETH 5/8" - 28 TEETH/40 DIVISIONS - 37 INVOLUTE TEETH - 48 TEETH 3/4" - 21 INVOLUTE TEETH	STANDARD : 54 TEETH 75 TEETH - 79 TEETH
	C4		STANDARD : 5 TEETH / 27 DIVISIONS	PLEASE CONSULT US
	C5		CONSULT US FOR DIFFERENT FORMS	